

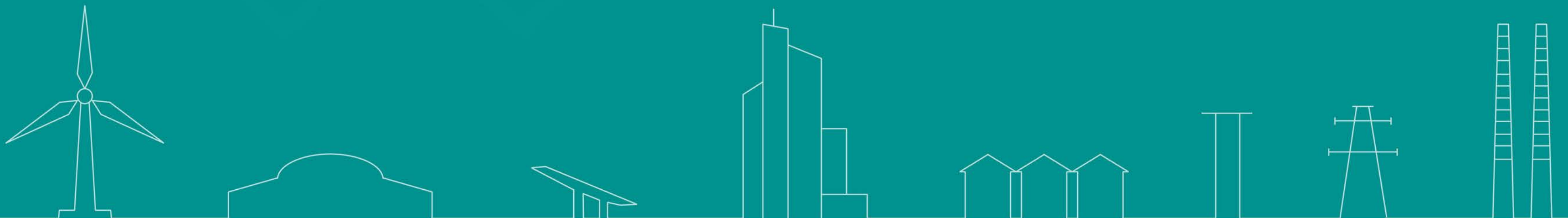
macroworks

DRAFT LVIA PHOTOMONTAGE

Moyvannan Substation

This book contains imagery for the viewpoints chosen for the LVIA study

May 2024

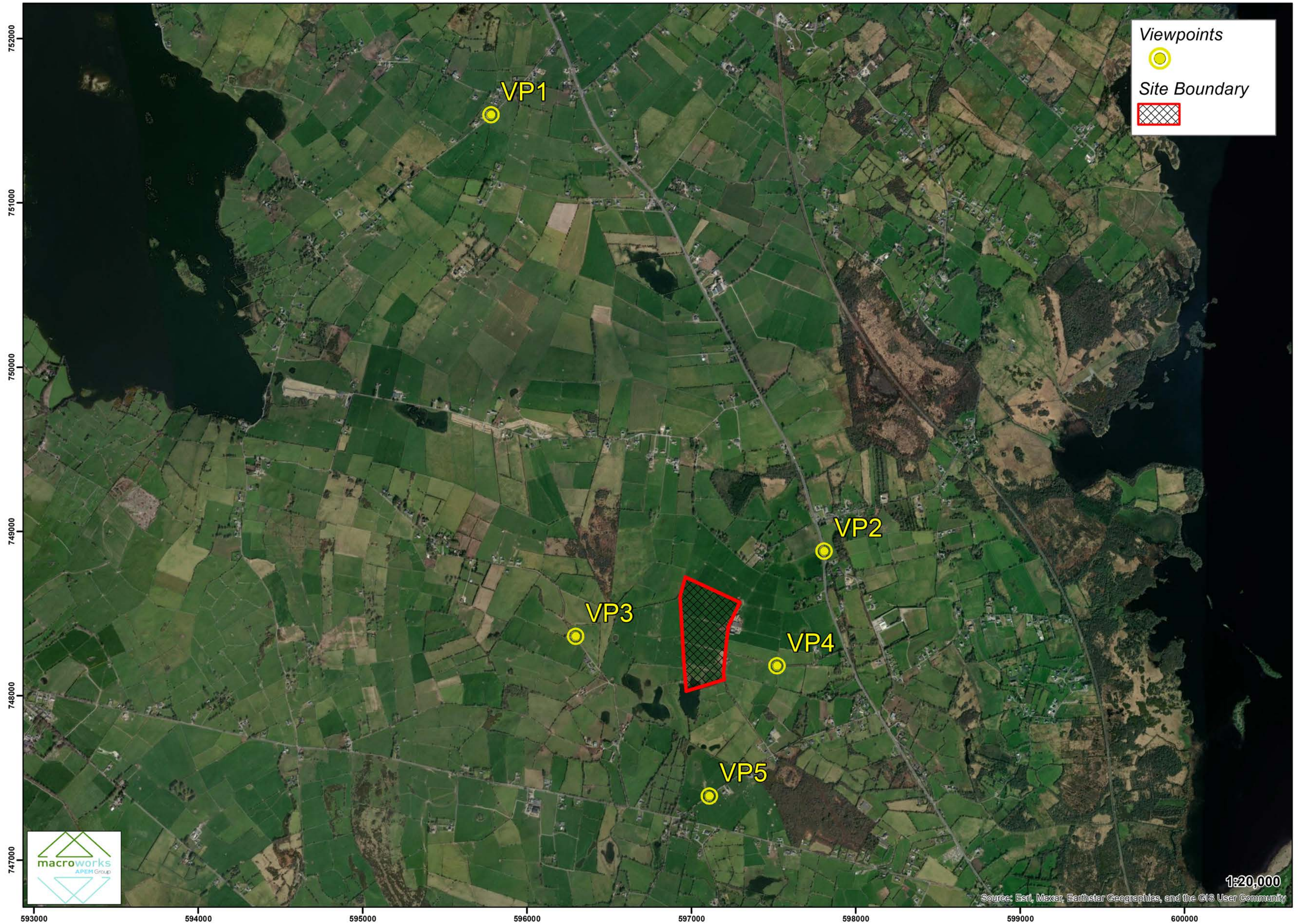


LVIA | TVIA | Landscape Design | Visibility Analysis | Glint and Glare | Verified Photomontages | CGI | Shadow Flicker Analysis

INDEX

Viewpoint 4 - Existing View + Outline View
Viewpoint 4 - Montage View

LVIA viewpoint locations selected for the Moyvannan Substation and Grid project





These are 80° panoramic montages captured and presented in accordance with the guidance set by the British Landscape Institute 2011 - Advice Note 01/11.

To view these panoramas on a flat surface one must move from left to right along its length whilst maintaining a perpendicular viewing direction and the specified correct viewing distance of 30cm. To see this entire panoramic scene in reality would necessitate turning one's head through 40°.

Easting (ITM):	597522	Lens:	50mm / Full Frame Sensor	Date:	2024/03/07
Northing (ITM):	748183	Camera:	Canon 1-D Mark II digital SLR	Time:	12:49
Direction of View:	66° W of Grid North	Camera Height:	1.7m Above Ground Level		
Angle of View:	80°				



Montage View



These are 80° panoramic montages captured and presented in accordance with the guidance set by the British Landscape Institute 2011 - Advice Note 01/11.

To view these panoramas on a flat surface one must move from left to right along its length whilst maintaining a perpendicular viewing direction and the specified correct viewing distance of 30cm. To see this entire panoramic scene in reality would necessitate turning one's head through 40°.

Easting (ITM):	597522	Lens:	50mm / Full Frame Sensor	Date:	2024/03/07
Northing (ITM):	748183	Camera:	Canon 1-D Mark II digital SLR	Time:	12:49
Direction of View:	66° W of Grid North	Camera Height:	1.7m Above Ground Level		
Angle of View:	80°				

